



OPERATING INSTRUCTION CARD FOR 512E / 712E RIDE ON SWEEPERS



512 / 712 SWEEPER OPERATING GUIDE - DAILY/WEEKLY MAINTENANCE

- 1: Switch on Ignition, allow 5/6 seconds to do checks, battery state etc.**



- 2: Start main brush rotation by pressing the illustrated button. Also adjusts main brush pressure.**



- 3: Engage side brush using lever illustrated below.**



- 4: Select main brush pressure, turning the knob illustrated below, see visual LED display.**



- 5: Select forward traction using the illustrated switch below. Twist accelerator grip to start.**



- 6: Start vacuum suction by pressing button illustrated.**



- 7. To stop, pull up brake lever, also locks as parking brake.**



- 8. To clean out debris container, turn latch to unlock & remove by sliding out.**



- 9. To empty dust collection container, turn latches, & remove.**



- 10: To collect large debris, pull up the red flap lever to allow entrance to the waste bin.**



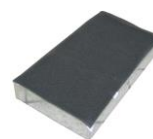
- 11: Whilst operating, always look ahead to avoid obstacles and pedestrians.**



- 1: Charging batteries with On-board charger if fitted, or by external charger.**



- 2: Unlock & twist latches to remove filter, clean with brush or vacuum.**



- 3: Check brushes for string / strapping that may have got around the brush, and check for wear.**



- 4: Check rubber skirts around main brush for wear & damage.**

