



IPC Gansow

CT100 PEDESTRIAN SCRUBBER DRIER

Operating & Care Guide

100 lt Solution Tank
110 lt Waste Tank
60 cm (24") 70 cm (28") 85cm (34")
Twin Brush



Battery Level Indicator
Emergency Stop/Start
Potentiometer – Speed Control
Brush Head Lowering & Pressure
Auto Brush Pick Up/Drop
Solution Control Lever
Forward/Reverse Operation Lever

Machine Operation

1. Fill the solution tank - taking care of spillage.



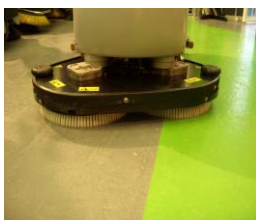
2. Switch on Ignition.



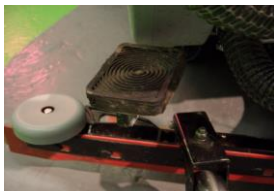
3. Position Brush/Pads for Auto Pick Up on flat level surface.



4. Brushes/Pads Located ready for Scrubbing.



5. Release Brake Pedal.



6. Select Solution Flow Rate.



7. Select Brush Pressure.



8. Select Traction Speed.



9. Operating Lever, Up Forward, Down Reverse.



10. Ensure Squeegee Drying OK



Daily Care

1. Drain Dirty Water Tank and Rinse Out.



2. Wash out Vacuum Filter.



3. Remove Squeegee Assembly and Clean.



4. Remove Brushes/Pads and Clean. 2 x 410mm Dia.



5. Charge Batteries – 24 volt 20A or 30A External or On-Board Charger

